

SOPHIA COLLEGE (AUTONOMOUS), AJMER



POLICY FOR INCLUSION OF STUDENTS WITH DISABILITIES

Preamble

According to the Government policy, a barrier-free environment is the fundamental right of differently-abled students (RPWD Act, 2016). In compliance with this, Sophia Girls' College has prepared and adopted a policy for the differently-abled students. The College entrusts in providing equal opportunities to all without any discrimination. Sophia College and its Management strive to furnish the maximum possible facilities at the best of its approach and resources for the differently-abled students. This perspective of the College brings in equality and harmony in the workspace.

Objectives

- To provide special infrastructure facilities
- To provide equal opportunities
- To nurture a compatible environment
- To provide special facilities during examination as per UGC guidelines
- To organize awareness programs

Practice

Sophia College (Autonomous) Ajmer recognizes that persons with disabilities are valuable human resource for the society and seeks to create an environment that provides them equal opportunities, protection of their rights and full participation in the activities of the College. For this purpose Sophia Girls' College (Autonomous), Ajmer has adopted a policy for the disabled students.

Admission:

- No academically qualified applicant will be denied admission in the College on the grounds of disability alone. All reasonable adjustment will be made and opportunity will be provided for full consideration of the specific support or facilities required for disabled candidate.
- Reservation for the differently-abled students shall be ensured in the Admission Policy as per Government norms.

Support Services:

The College shall make sure that disabled students have equal opportunity to utilize the support services. The following facilities will be provided by the College for the benefit of such students:

- Ground floor classrooms shall be provided for differently abled students by reshuffling the time-table.
- Human assistance shall be provided
- Rehabilitation equipment like canes, crutches and wheel chair shall be made available
- Provision shall be made for easy access to buildings, rooms and toilets
- Disabled students shall have access to friendly paths and specially prepared walkways
- Fully equipped infirmary shall be made available
- Ramps at prime locations are available for the students
- Easy approachable seating in the classroom shall be ensured.
- Sensitization Programmes shall be organized through Value Education to develop a sense of responsibility among all the students for their differently-abled classmates.

Assessment and Examination

The College shall make reasonable adjustment and appropriate arrangements for disabled students in lectures, seminars, practical sessions, assessment and examination. Time relaxation shall be allowed and scribes shall be provided to differently-abled students for examination.

R.K. CONSULTANTS

(Vaastu Based Planning and Designing)
Registered Architect & Valuer (A.D.A. & Nagar Nigam Ajmer)
1098 "Mrigank" Near Hotel Mansingh Palace Shantipura
Ajmer Mo. 9414269418,

Er. Rajesh Purohit (B.E. Civil)

FIV- 1847

MIEI -1417045

AJV -0015

(CHARTERED ENGINEER)

(CAT-1/CCIT/AJM/03/2011)

Rk/Safety/05/2019-20

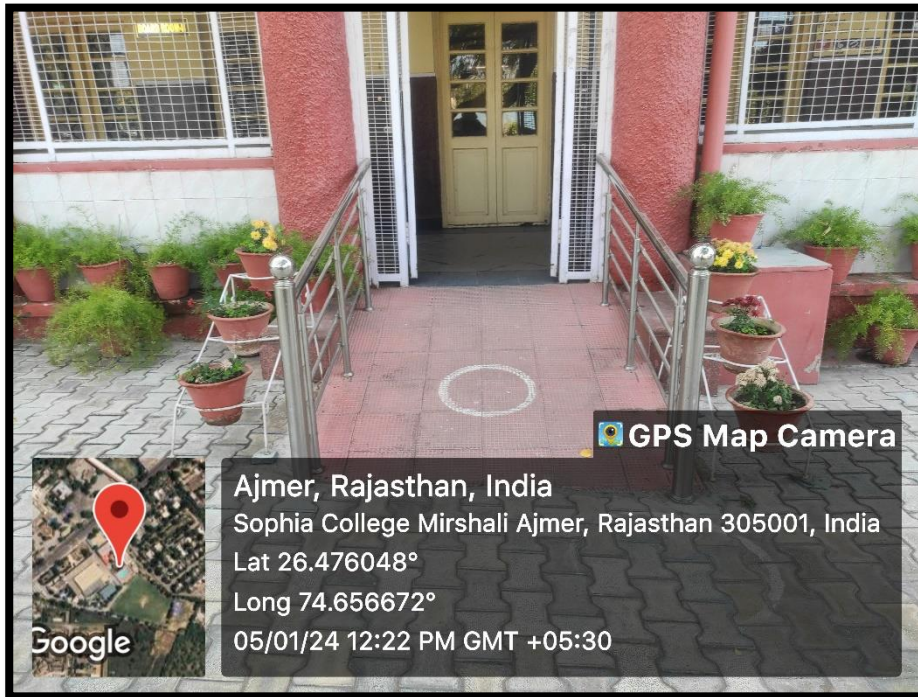
Date : 28/06/2019

CERTIFICATE OF DISABLED FRIENDLY CAMPUS

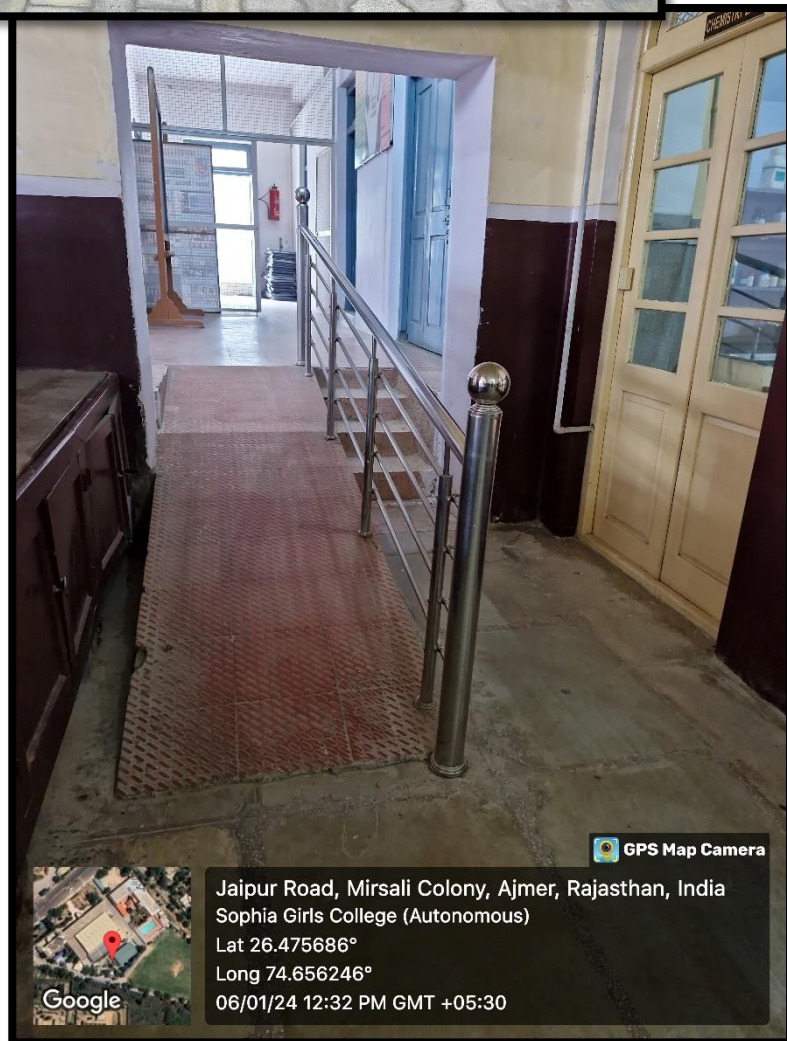
After inspection it was found that Sophia Girls' College, Ajmer Campus
Has adequate facility for Persons with Disability

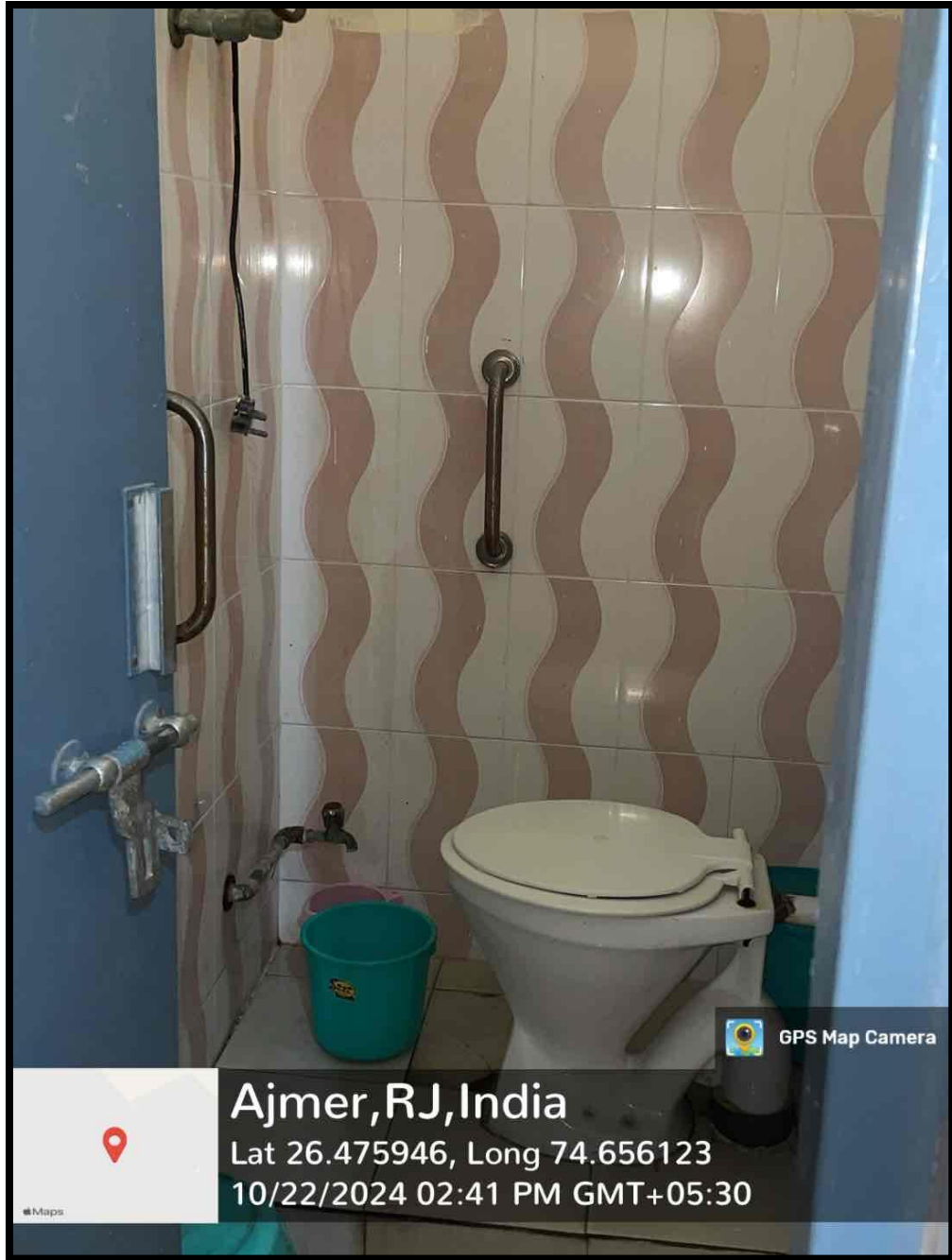

Er. Rajesh Purohit
Approved Architect
Ajmer Development Authority

Er. Rajesh Purohit
(Govt. Approved valuer & Architect)

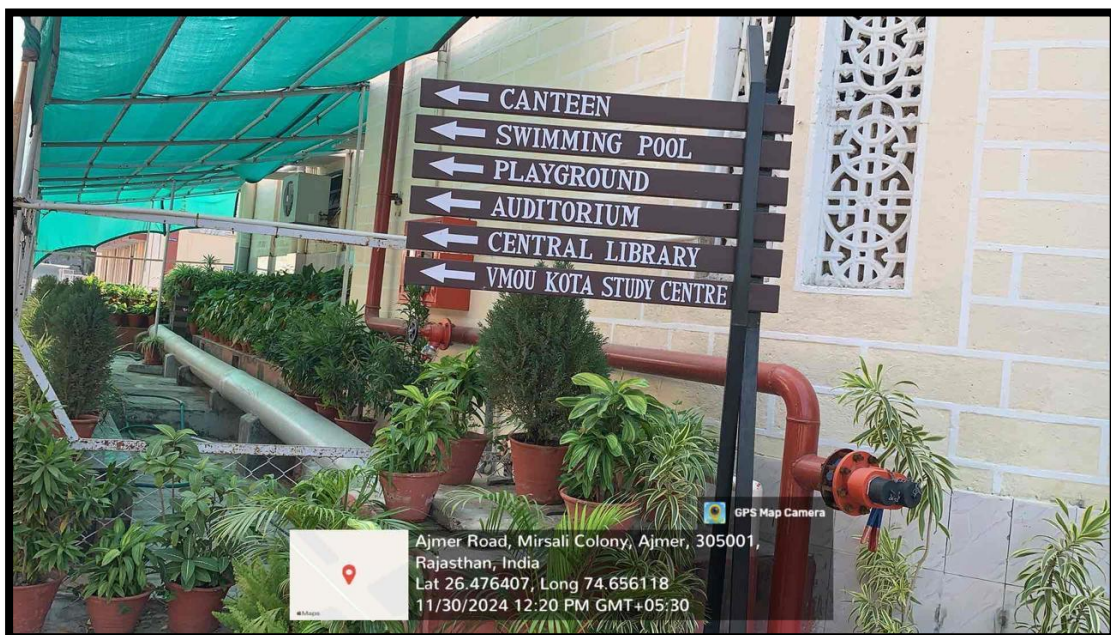
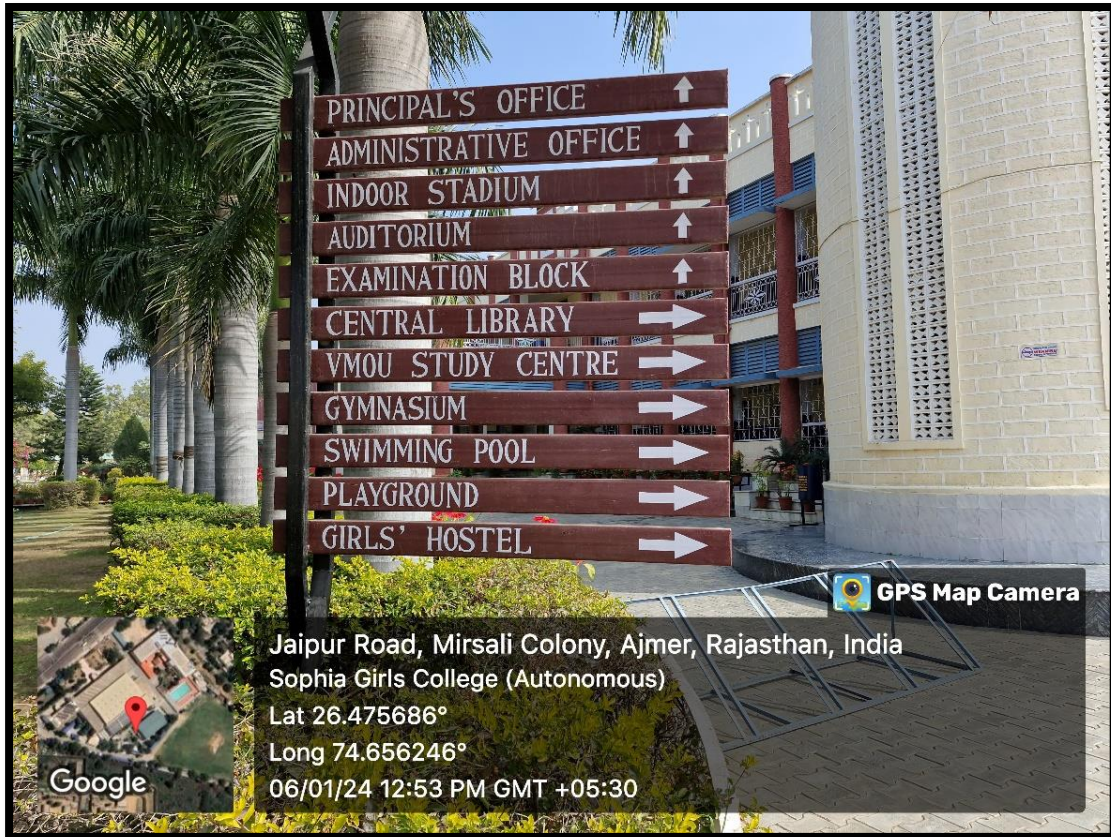


Ramps & Railings





Disable Friendly Washroom



Signages



Wide & Spacious Corridors